

# *Renewable Energy -Latest Trends and Technologies*



**Confederation of Indian Industry  
CII – Godrej Green Business Centre, Hyderabad, India**

# Solar Mill

## ❖ The SolarMill Generates :

- ▣ Daytime energy from the sun and wind.
- ▣ Day & Night energy from the wind.
- ▣ Standing at about 1 meter height, Solar Mill meets building code requirements.
- ▣ 3 Vertical-Axis Wind Turbines coupled to 3 permanent magnet generators
- ▣ On-Board “Smart” Electronics include dynamic Maximum Power Point Tracking (MPPT) and connectivity



# Solar Mill

## ❖ Solar Mill Assembly:

- ❑ 3 Vertical Axis Turbines mounted on a single base.
- ❑ Cut-in wind speed – 2 m/s & Cut-out wind speed – 18 m/s.
- ❑ Turbines (Savonius) produce energy by accepting winds coming from any direction.
- ❑ Designed for both On-Grid and Off-Grid applications.



# Solar Mill



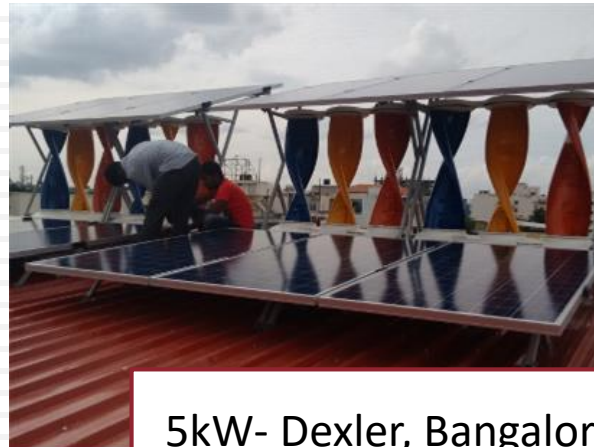
13kW- Residence,  
Shamshabad



10kW- Sidvin Plastech,  
Shameerpet



5kW- GreenAssets,  
Dehradun

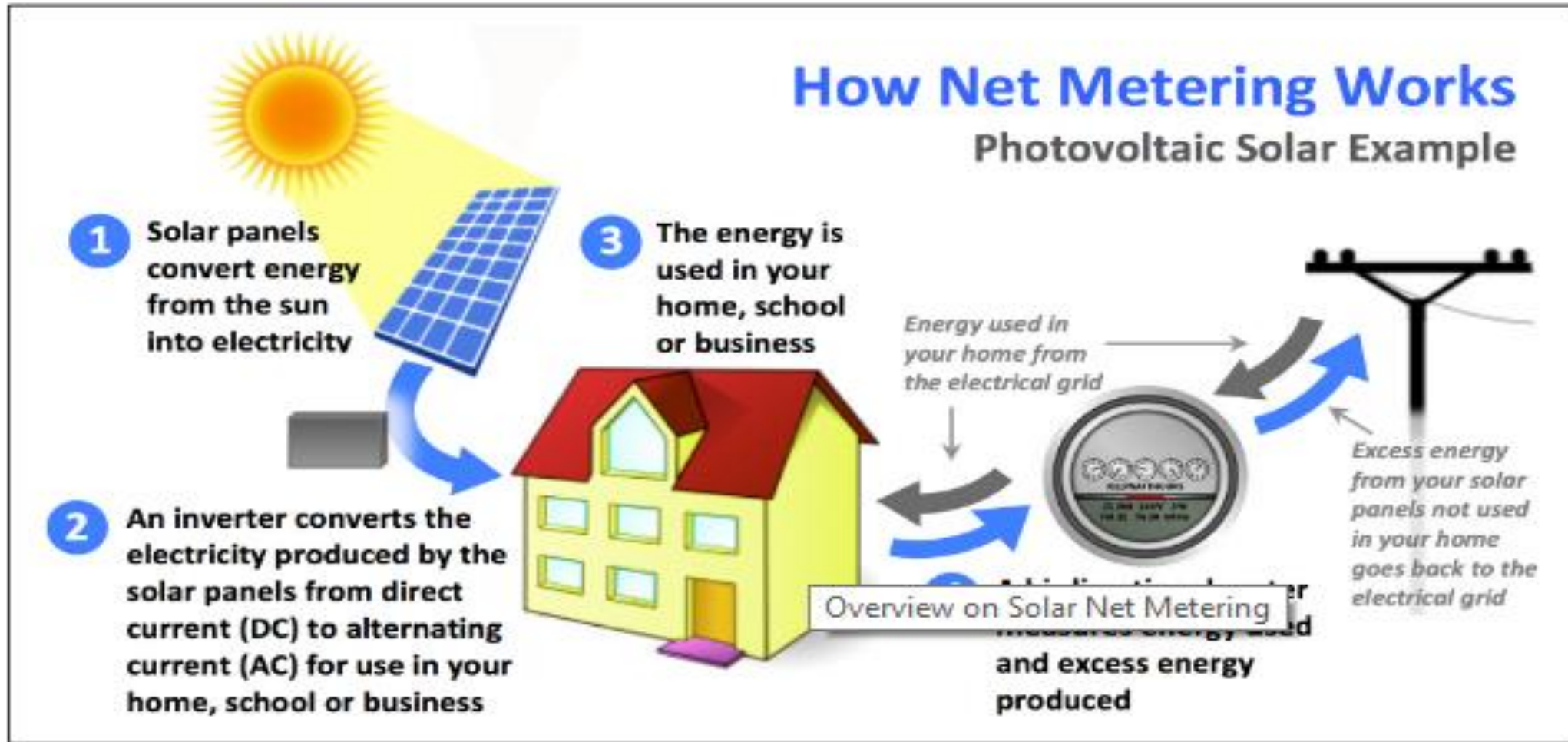


5kW- Dexler, Bangalore

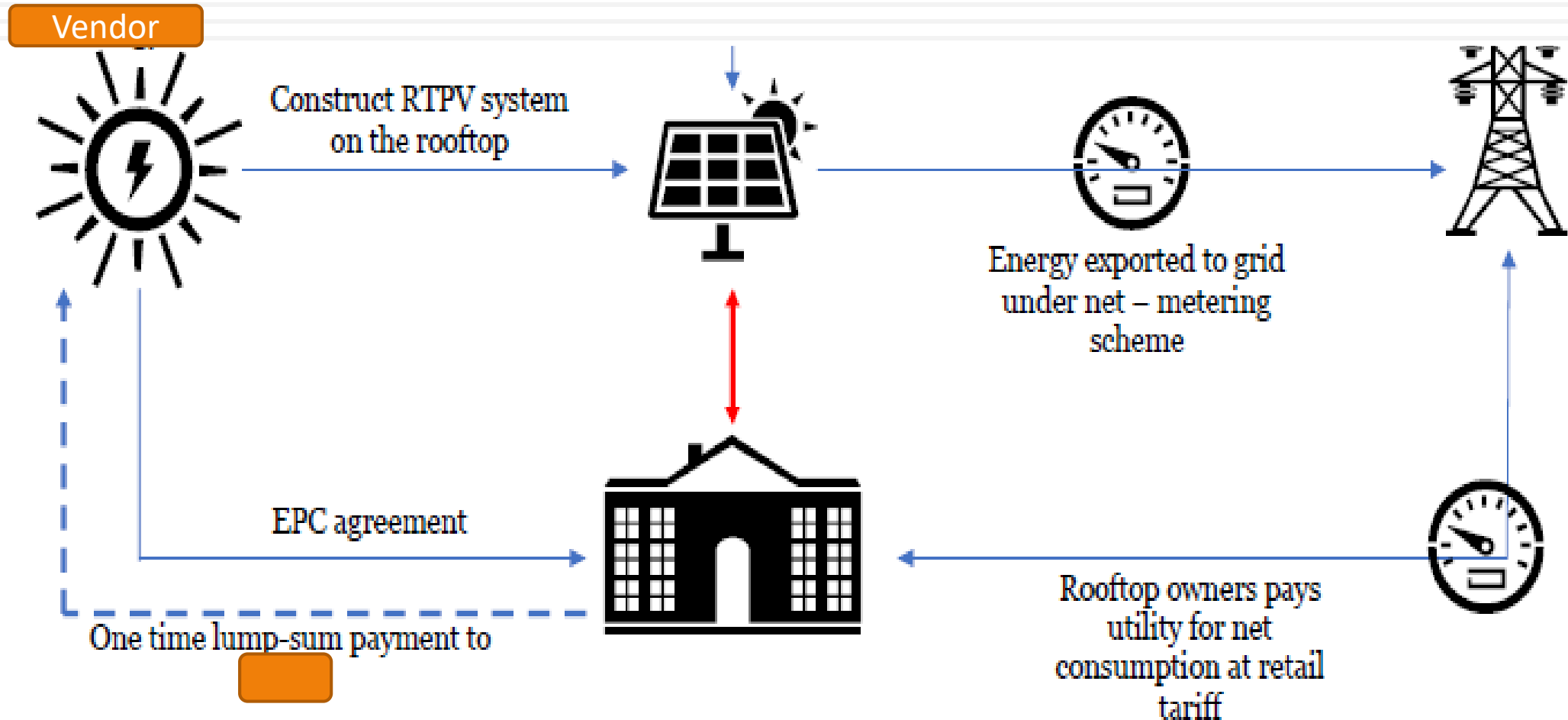
# Solar Mill Performance Video



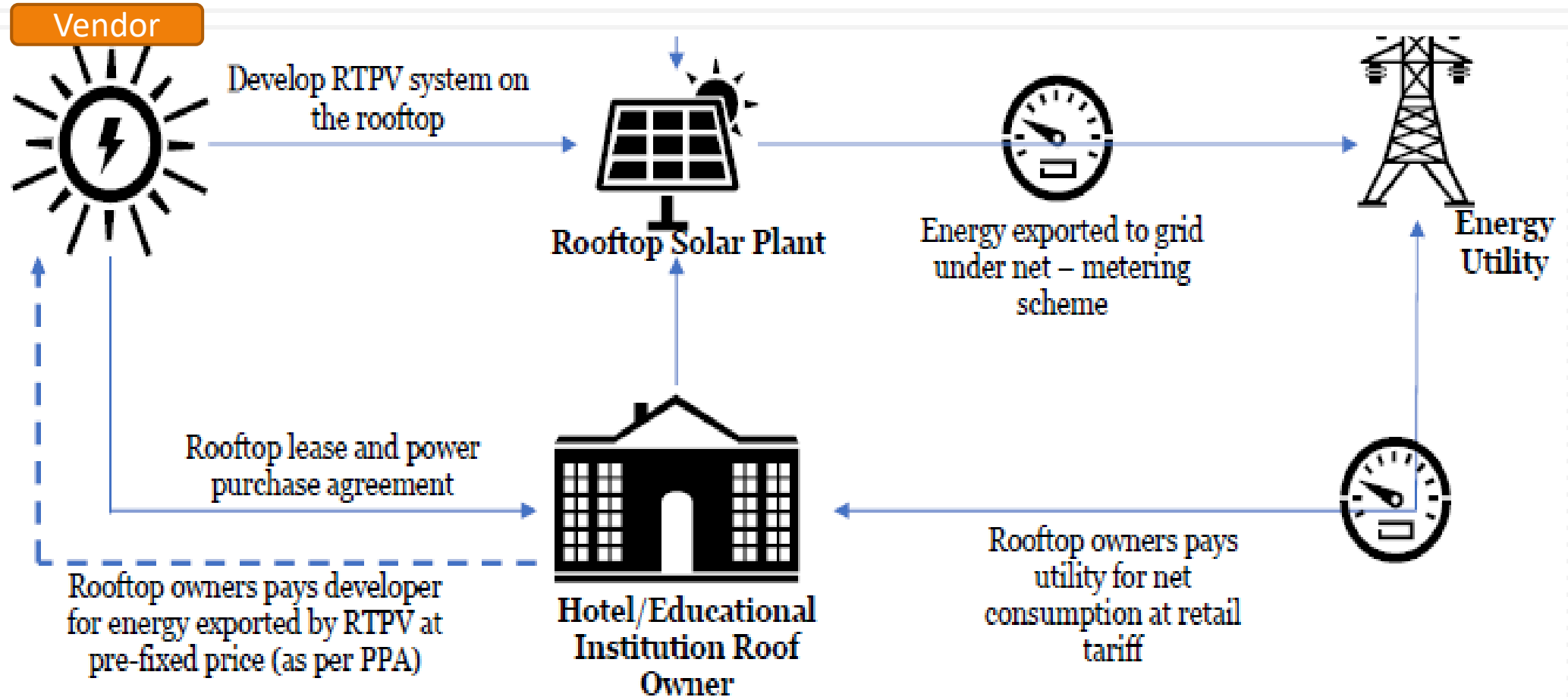
# Net Metering



# CAPEX MODEL



# RESCO MODEL

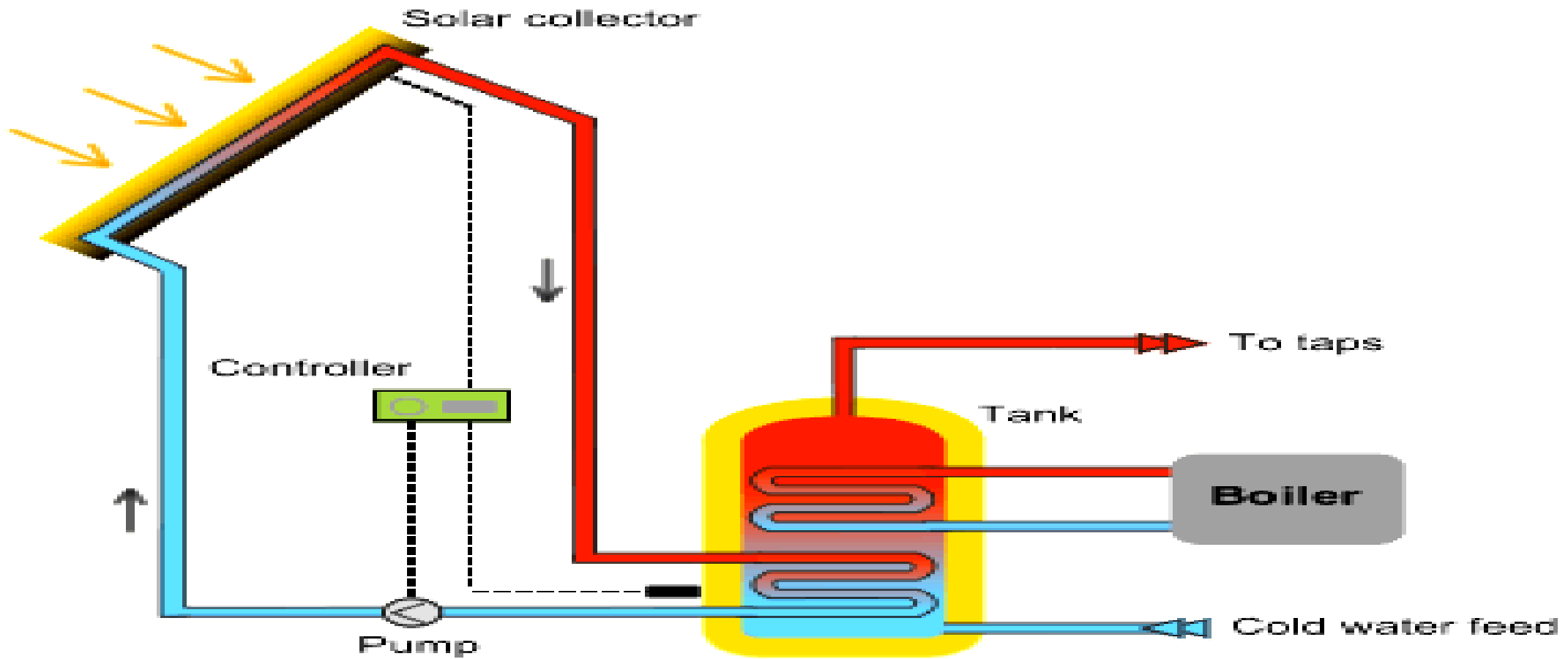




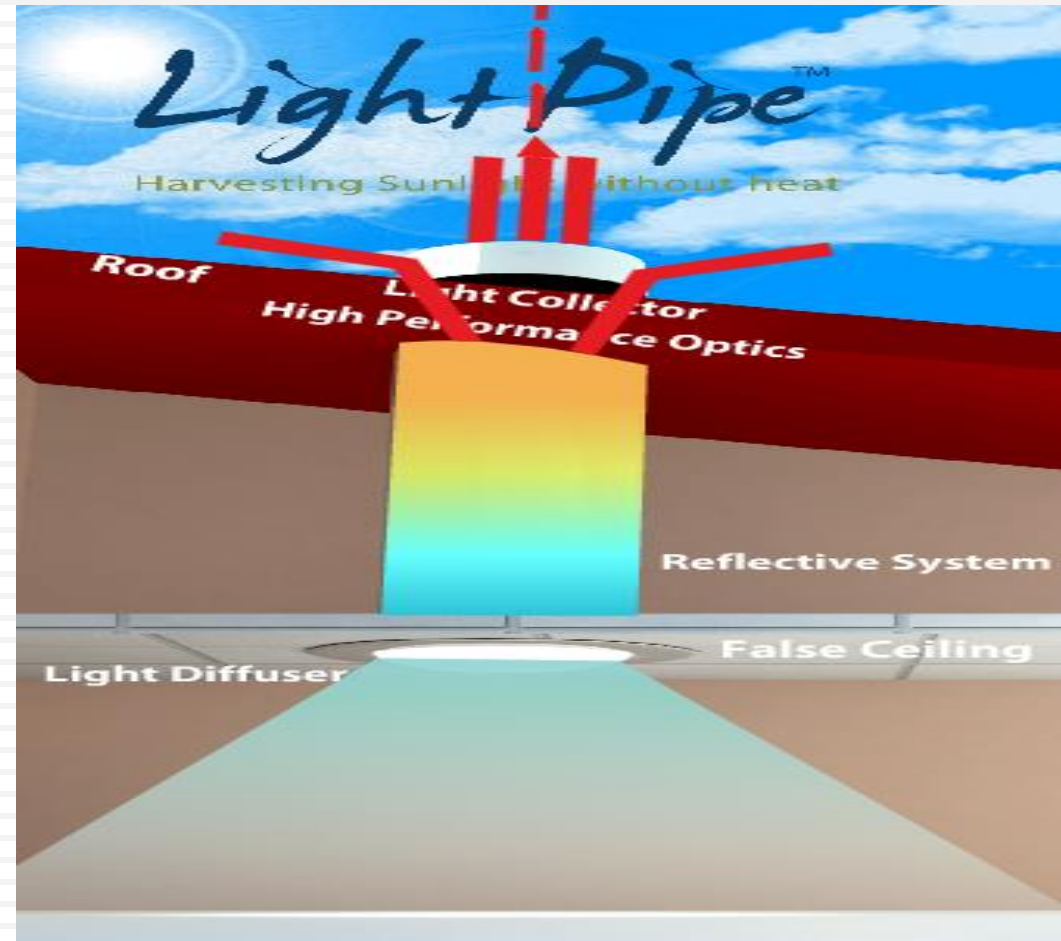
# Solar Roof Top



# Solar Thermal



# Light Pipe



# Light Pipe



# Light Pipe

Size	External light 1lakh to 1.1 lakh lux	Area lit up (approx.)	Max. length
250mm (10")	450 lux	150 Sft	6 Metres
400mm (16")	1500 lux	250 Sft	8 Metres
530 mm (21")	3000 lux	450 Sft	12 Metres
750 mm (30")	5000 lux	900 Sft	Short Length



# Light Pipe



Electrical lighting



LightPipe™



# Light Pipe



**Thank You....**